



**Welcome
to**

Medicare Systems Pvt Ltd.

Complete Healthcare Solution

www.medicaresystems.co.in
info@medicaresystems.co.in

Brief Profile of Medicare Systems Pvt Ltd

- **Product and Services Company**
- **Focus on Complete Healthcare Solutions**
- **Highly Trained Software and Healthcare TEAM**
- **Clients: More than 500+ small to big satisfied clients across India and Abroad.**
- **Experience: More than 25 years of Rigorous Healthcare**
- **Channel Partners and Offices in-IRAQ, NEPAL, SAUDI ARABIA, AFRICA(ABIDJAN, CONGO, UGANDA)**

Healthcare IT PRODUCTS

- **Hospital Management Software**
- **Telemedicine Software**
- **HR Management**
- **Accounts Management**
- **PACS(Picture Archiving and communication Systems)**
- **CAMPUS MANAGEMENT SYSTEM(For Schools/Colleges)**
- **Medical Equipment's Sales n Service(CT/MRI/LAB Equipment's)**
- **PPP models with Governments**
- **Mobile app(Android n iOS)**

- **ICD10** – All our existing Customers are using IDC10 in & our versions have been compliant since 2005
- **HL7** – We have been compliant to this since 2006
- **IHE** – Our PACS Application is compliant and built on IHE(Integrating the Healthcare Enterprises)
(our core HIS Application supports IHE Profiles on all Specialty based device integrations like Dental, Cardiology, ENT etc.), Laboratory Equipment Interfaces also supporting profiles in the areas of Care Coordination, Patient Care Devices, Pharmacy Workflows and more)
- **ISBT128** – Our Application supports generating & reading ISTB 128 compliant Barcodes
- **DICOM**–Digital Imaging and Communications in Medicine, is the international standard for the storage and transmission of medical images and related information

WE CATER TO



Superspecialty
Hospital



Group of Hospital



Imaging Center



Hospitals

MEDICARE SYSTEMS PVT LTD



Clinics & OPD



Laboratory/Diagnostic Center



Pharmacies



Blood Banks

PRODUCT RANGE



Super Specialty HIMS



Small Hospital Management System



Blood Bank Management System



Diagnostics Management System



Radiology Management System



Pharmacy Management System








Clinic Management System



Drug Interaction Management System

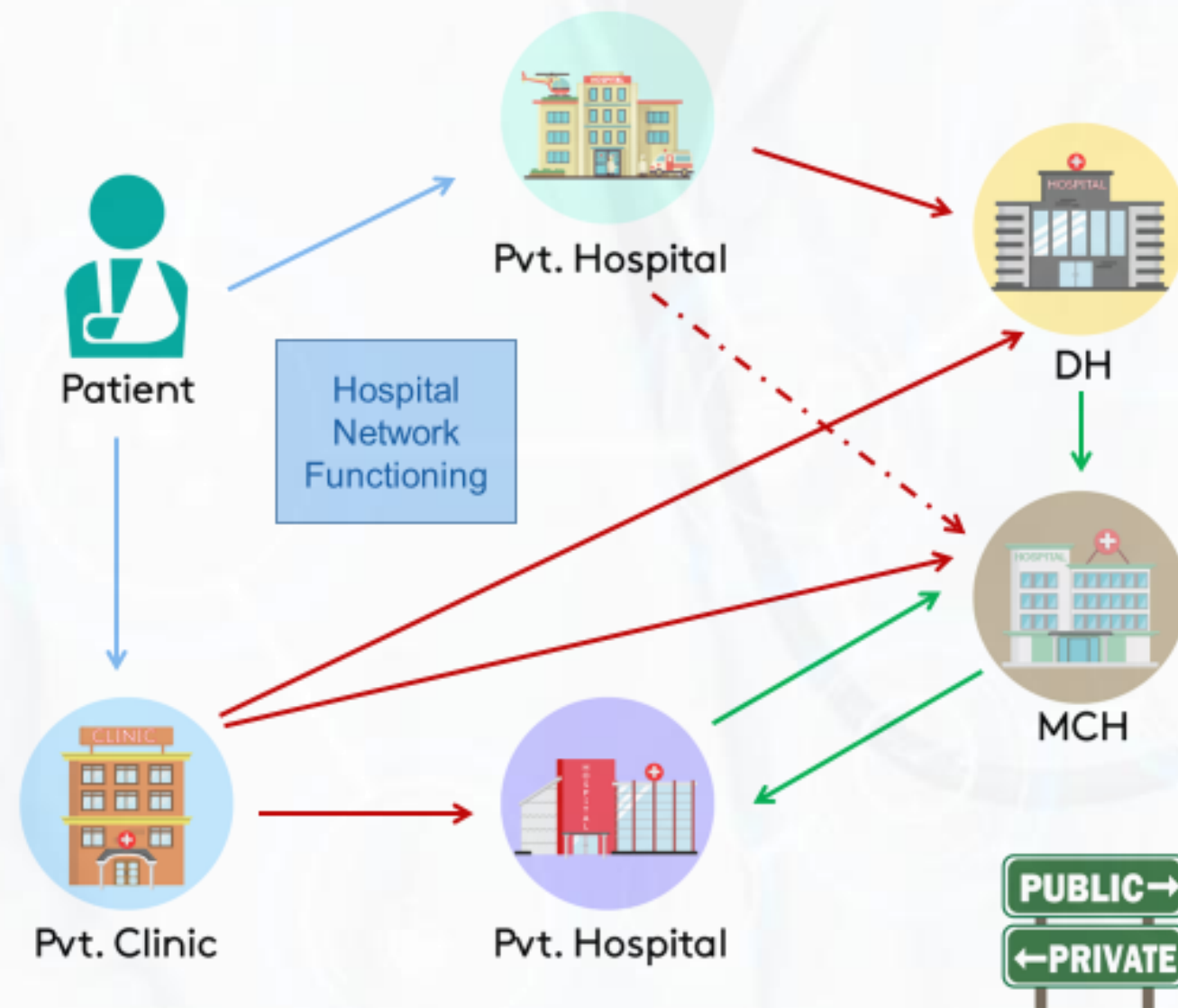
OUR OBJECTIVES

-  **Access information anywhere anytime**
-  **Minimal paperwork**
-  **Digitally connected healthcare network**
-  **Improve efficiency**
-  **Reduce cost**

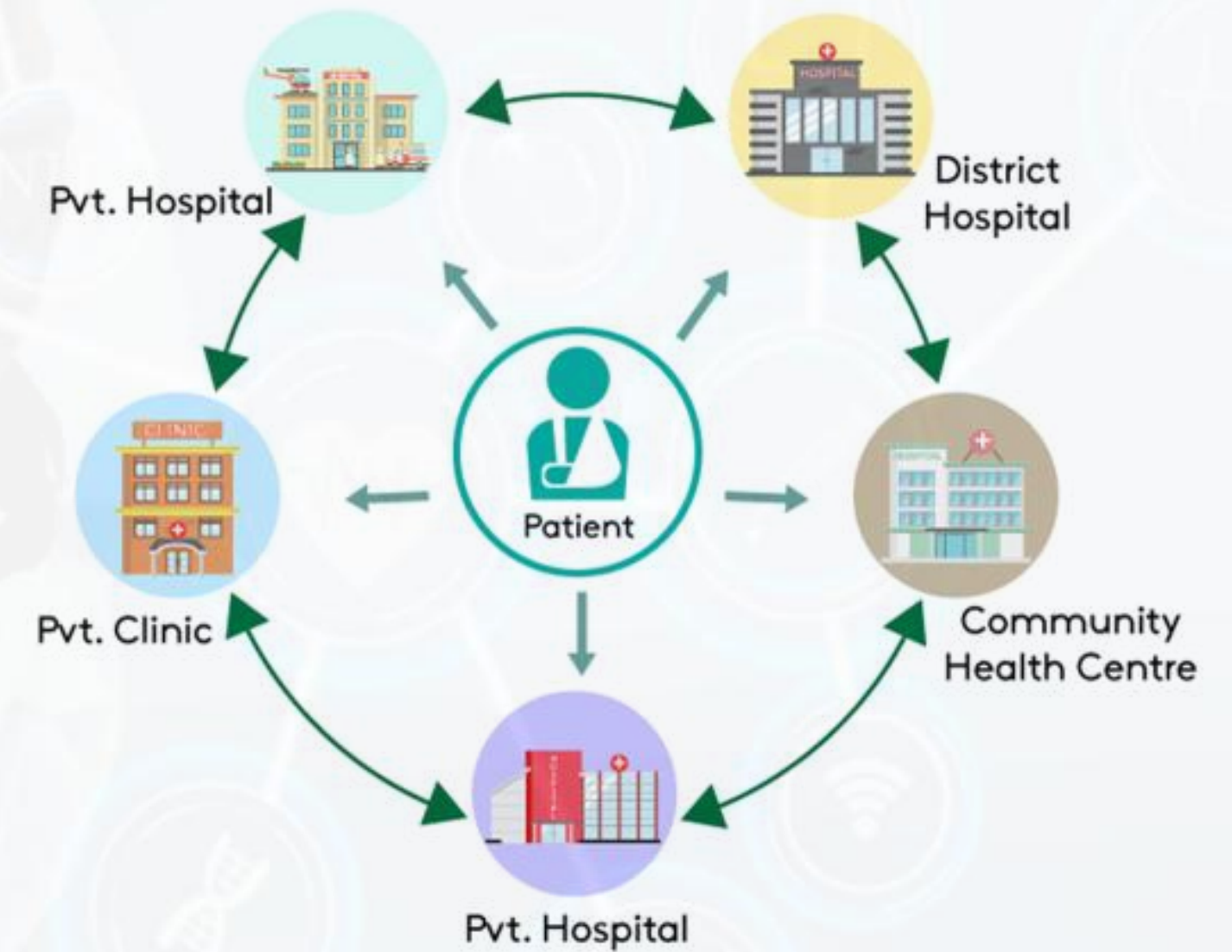


WHAT WE DO

Current Healthcare Scenario



The future with Sanjeeva HIMS



TECHNOLOGY STACK

USER INTERFACE AND CLIENT

Web browsers: IE, Mozilla
Firefox, Google Chrome,
Safari, etc.

Operating System:
Windows

APPLICATION SERVER

- .NET framework
- AJAX Development Toolkit
- Web Services
- WCF Services
- IIS

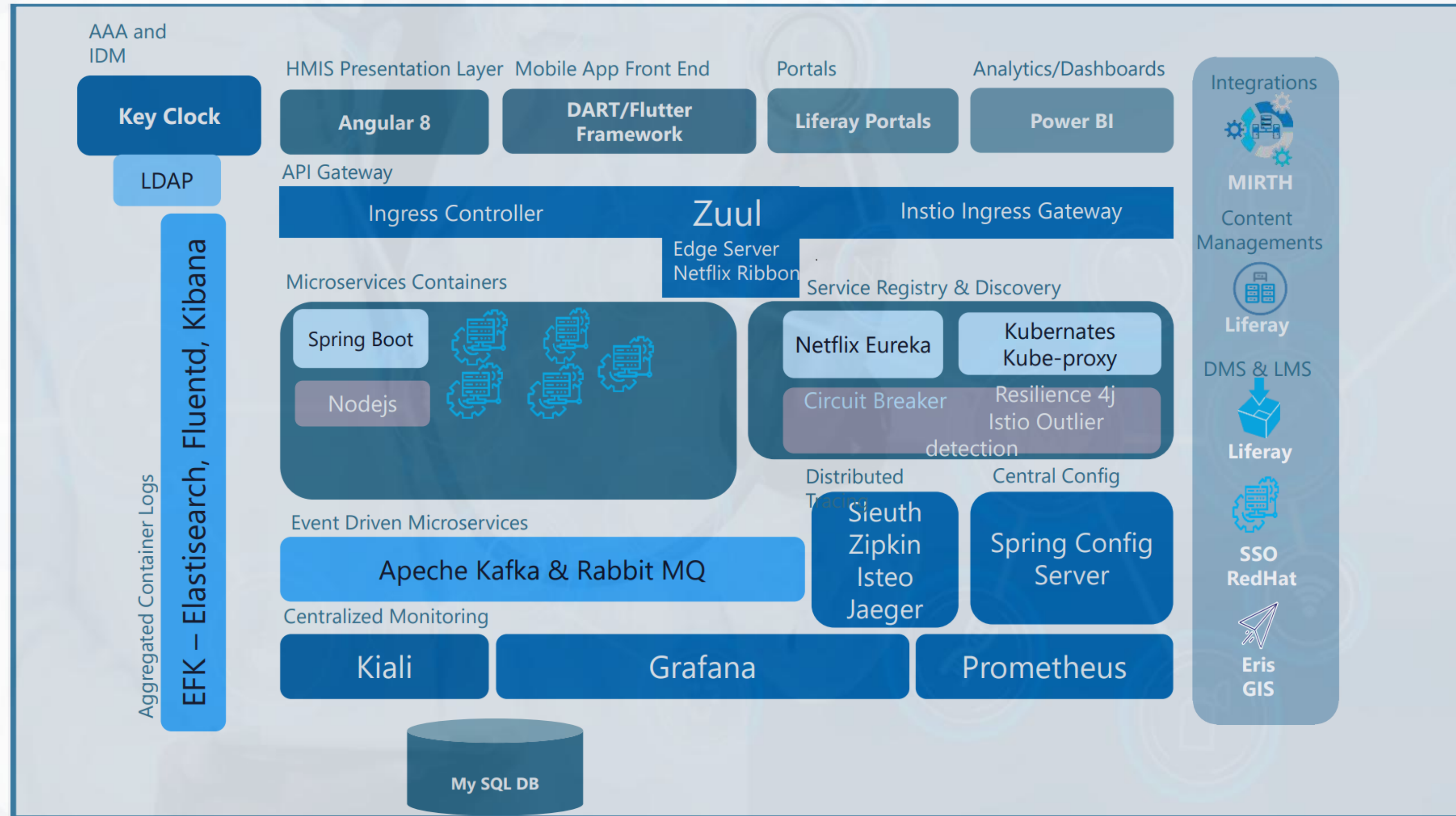
BACK-END (DATABASE SERVER)

- SQL Server
- DB2
- Mongo DB

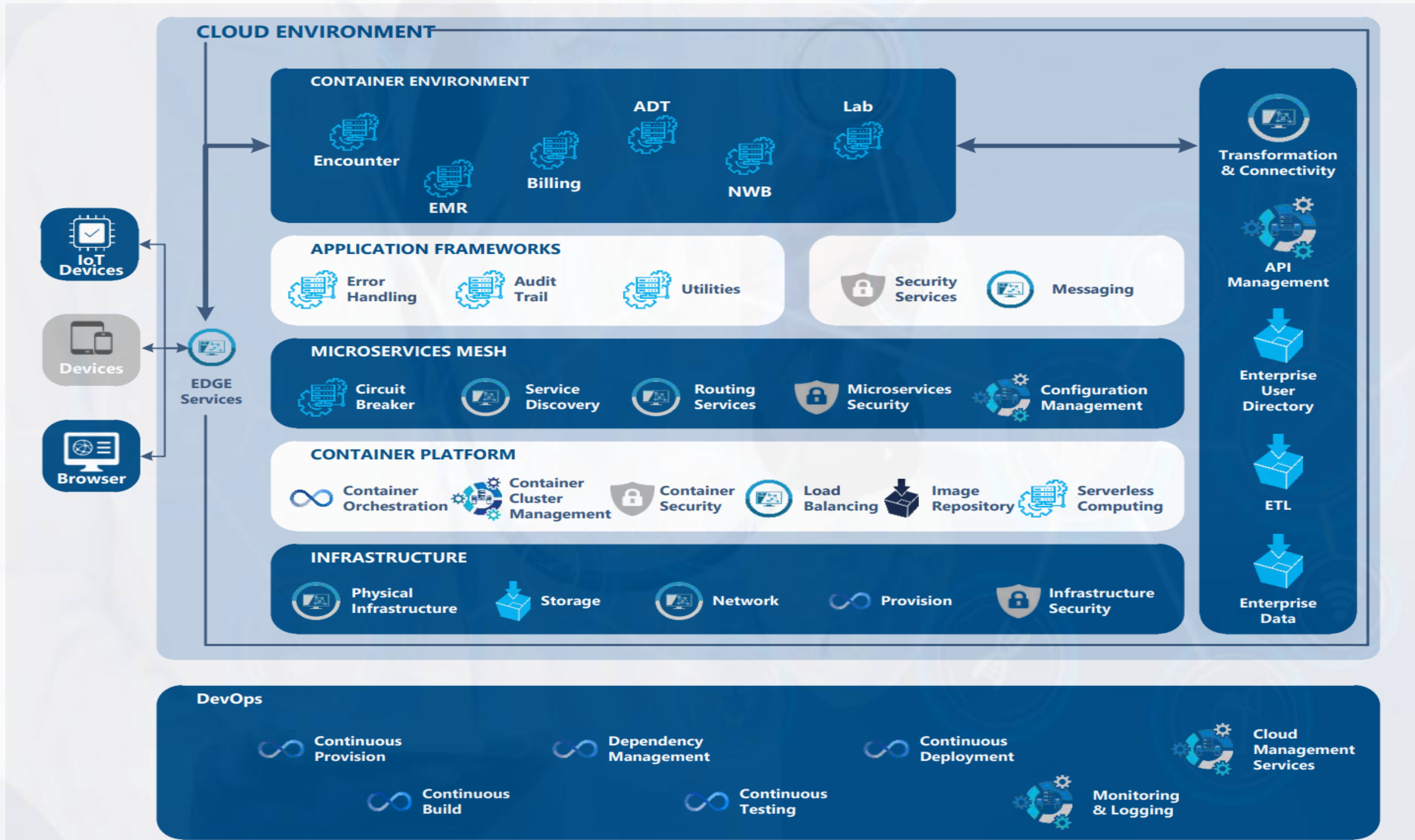
HARDWARE

- Intel platform
- IBM series

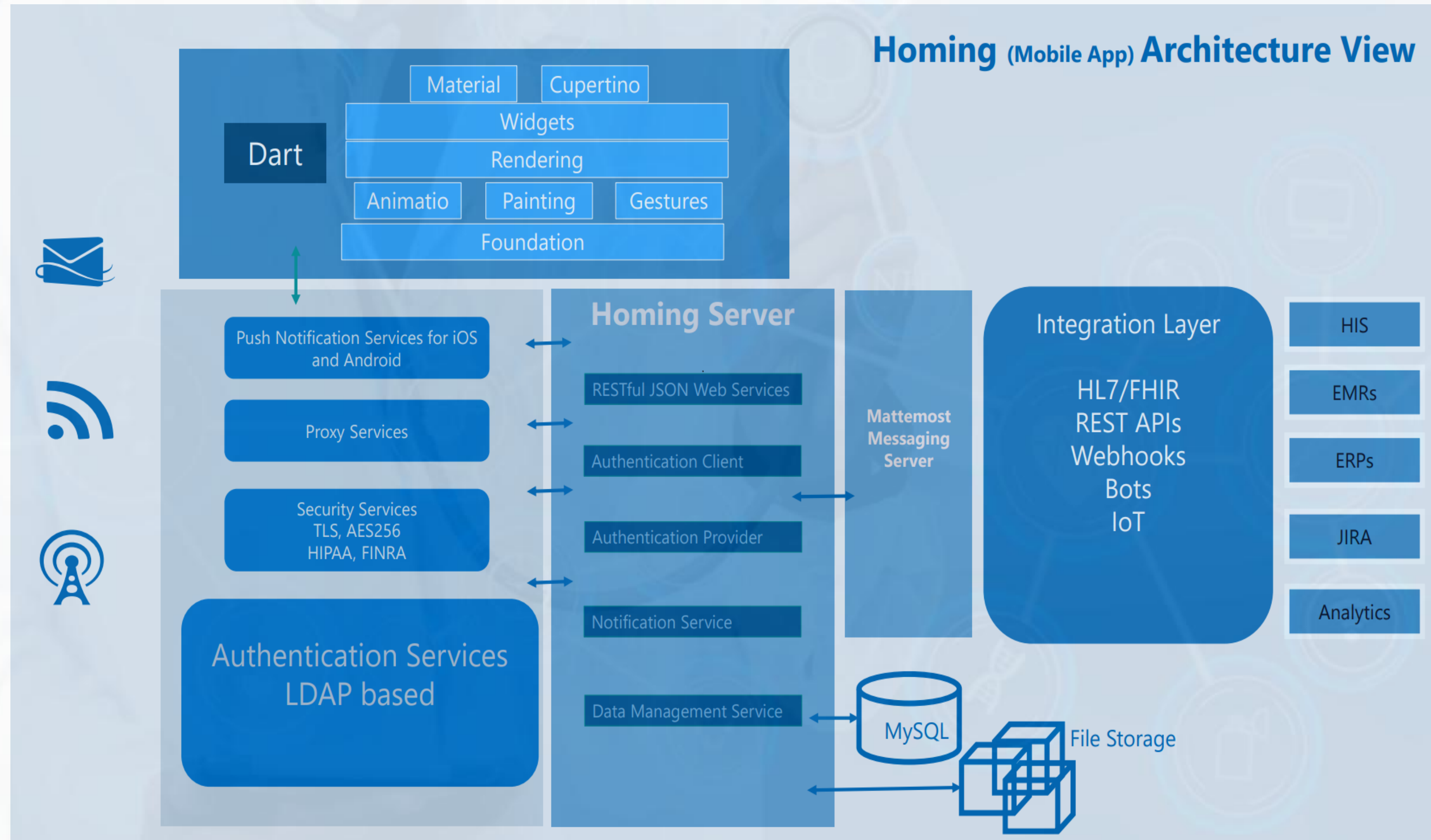
Technology Stack View



3 Layer Solution Architecture



Mobile App Architecture



AREAS WE FOCUS ON



**PATIENT
ADMINISTRATION**



**CLINICAL
MANAGEMENT**



**RESOURCE
MANAGEMENT**



**FINANCIAL
MANAGEMENT**



**INFORMATION
MANAGEMENT**

CATEGORIZED CLASSIFICATION OF MODULES



Patient Management

- Appointment Scheduling
- Outpatient Management
- Inpatient Management
- Consultation
- Registration / Master Patient Index
- Accident & Emergency
- Insurance
- Housekeeping & Linen Management
- Billing – OP/IP
- Order Entry & Result Reporting
- Clinician's Access
- Medical Records
- Notes Tracking



Resource Management

- Pharmacy Management with Stock Control
- Dietary
- Nursing Management
- Ambulatory Management
- Specialty Clinic Room Management

CATEGORIZED CLASSIFICATION OF MODULES



Clinical Management

- **Laboratory Information System**
- **Radiology Information System/ Imaging**
- **Histopathology**
- **CSSD**
- **Operation Theatre Management**
- **Blood bank**
- **ICCU / ICU**
- **General Electronic Medical Records**



Financial and Inventory management

- **Finance Management**
- **Inventory Management**
- **Doctors Accounting**
- **Budgeting and planning**
- **Costing**
- **Asset & Equipment management**

CATEGORIZED CLASSIFICATION OF MODULES



Support Service Management System

- **Materials Management**
- **Stores & Procurement Management**
- **Human Resources Management**
- **Kitchen Management**

- **Customer Relationship Management**
- **Linen Management**
- **House Keeping**
- **Asset Management**
- **Emergency Services**



Management Information System

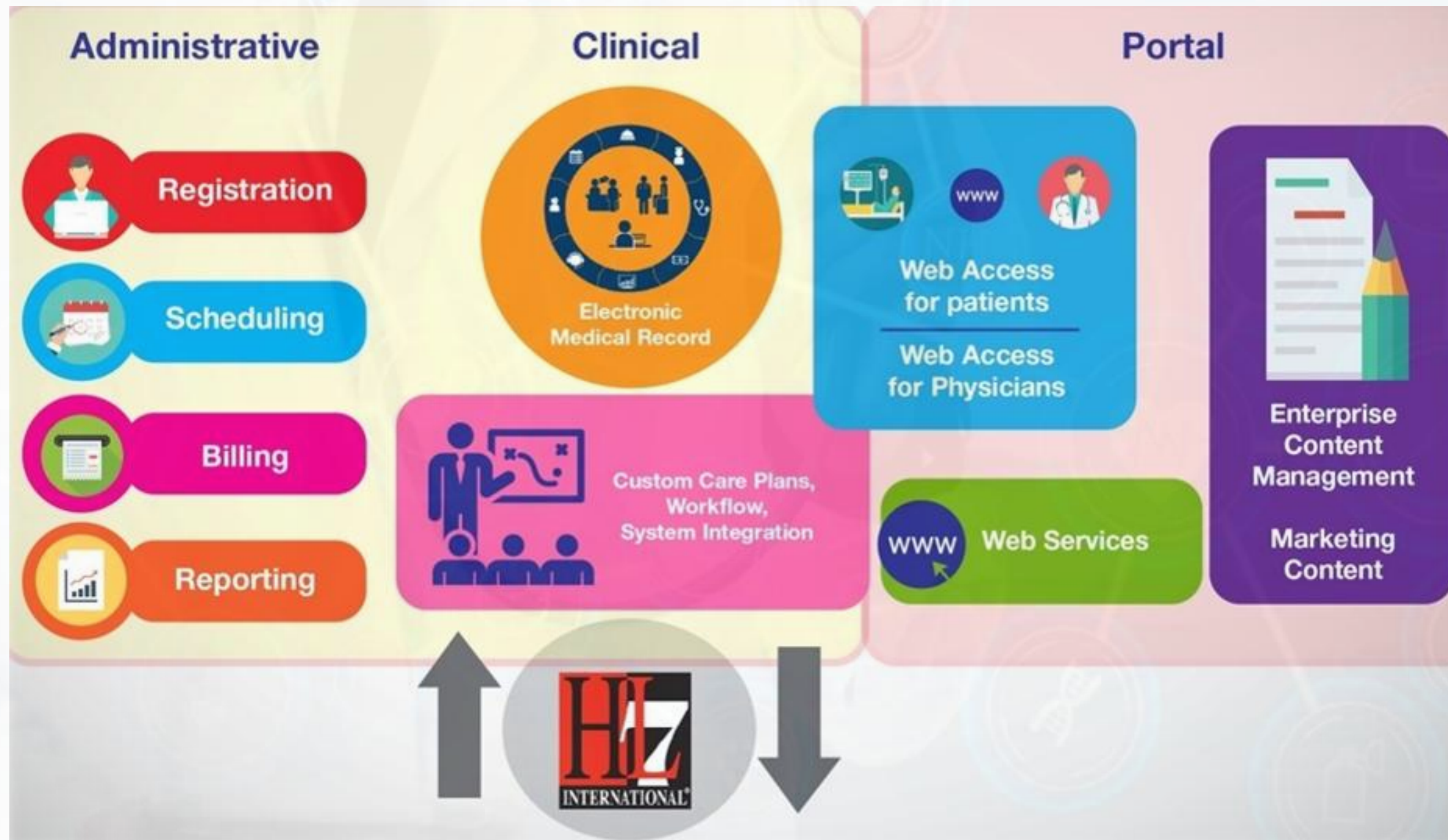
- **Administrative statistics**
- **Case Mix Management**
- **Resource utilization reports**

- **Clinical statistics**
- **Decision Support System**
- **Financial Analysis**

SANJEEVA MODULES

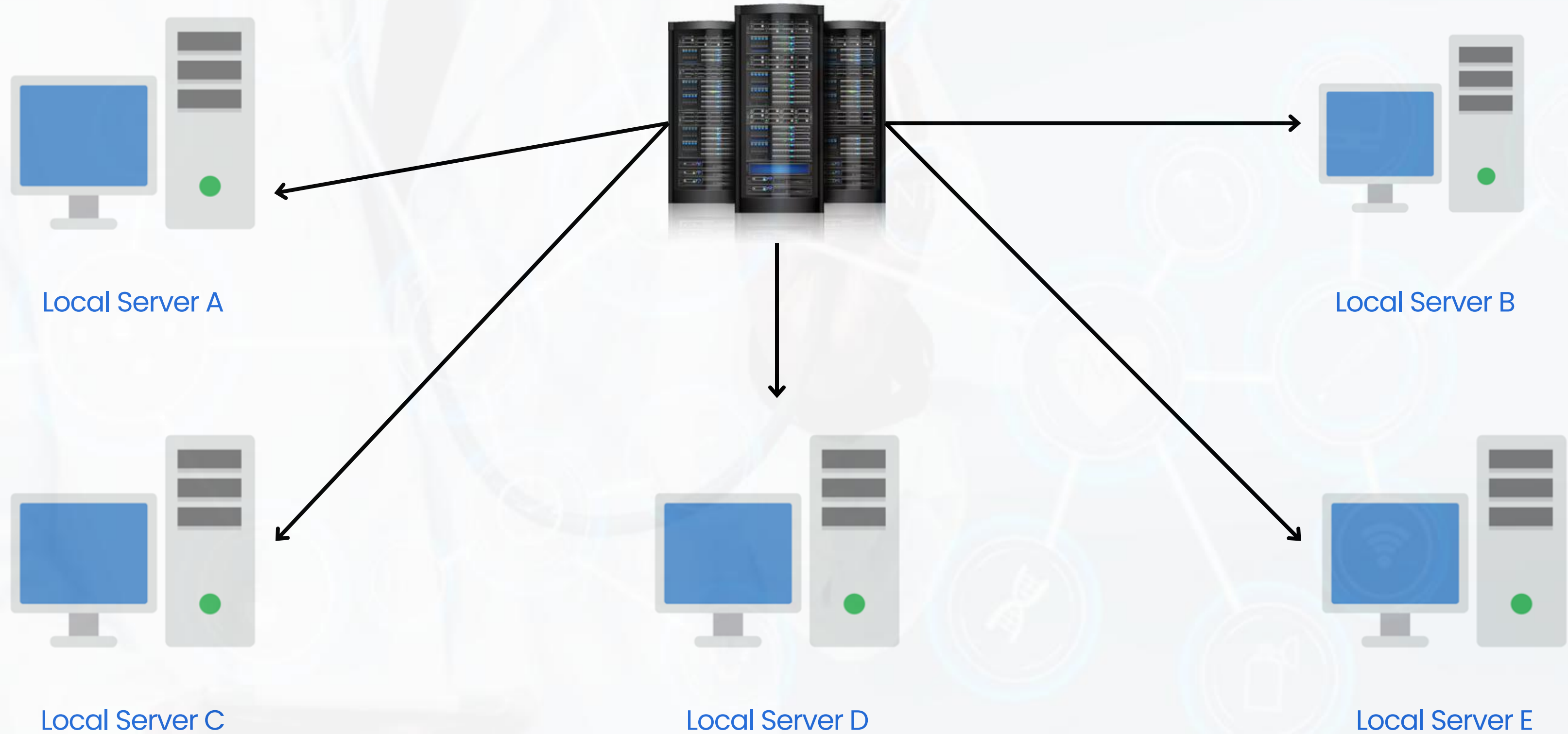
| | | | | |
|-------------------------------------|---|------------------------------------|---|--------------------------|
| PATIENT REGISTRATION | WARD / ROOM MANAGEMENT | EMERGENCY/ CASUALTY | DOCTORS WORKBENCH | IPD PATIENT MODULE |
| LABORATORY INFORMATION SYSTEM | RADIOLOGY INFORMATION SYSTEM | OPERATION THEATER MANAGEMENT | CERTIFICATES ISSUE | ROSTER MODULE |
| COMMUNICATION MODULE | INVENTORY & FIXED ASSET | MEDICAL STORE MANAGEMENT | WARD PHARMACY/ INVENTORY MANAGEMENT | PHYSIOTHERAPY MODULE |
| DIET MODULE | HOUSE KEEPING MODULE | PAY ROLL MODULE | FINANCIAL ACCOUNTING MODULE | DENTAL MODULE |
| BLOOD BANK | MEDICAL RESEARCH | ICD – 10 DIAGNOSIS MODULE | DONATION MODULE | BILLING MODULE |
| AMBULANCE MODULE | USER MANAGEMENT | ADDRESS DIRECTORY | BACKUP/ RESTORE MODULE | MIS REPORTS |
| EQUIPMENT MAINTENANCE | CENTRAL STERILIZED SUPPLY DEPARTMENT | DOCTORS ACCOUNTING | NURSING MODULE | LIBRARY MANAGEMENT |
| HUMAN RESOURCE | PAYROLL | OPHTHALMOLOGY MANAGEMENT | WASTE MANAGEMENT | PACS & TELE RADIOLOGY |
| KITCHEN | EMR MODULE | | | |

WEB HIMS WORKFLOW

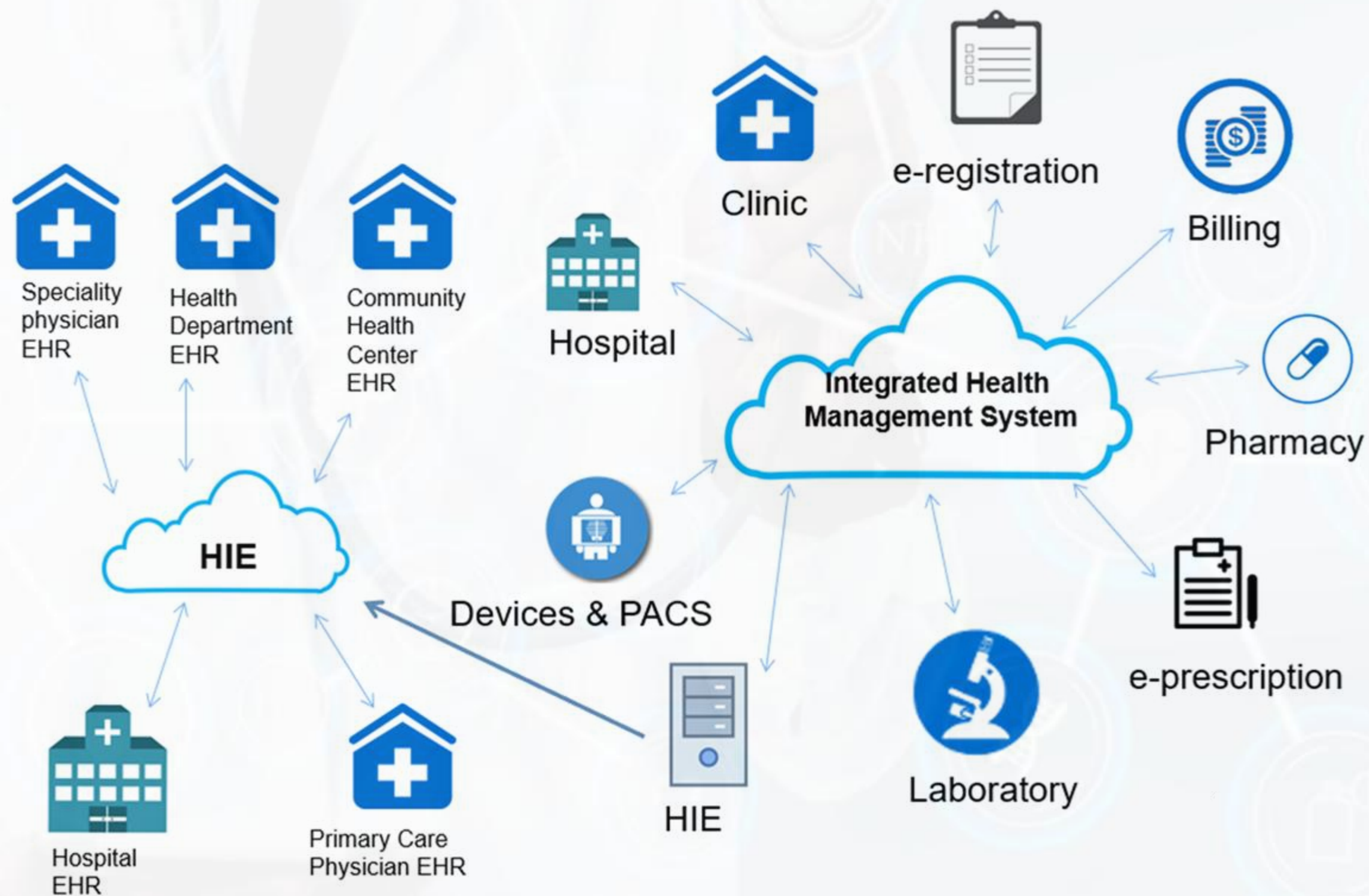


HOSPITAL CONNECTIVITY

Centralized Server Distributed Computing



SANJEEVA INTERFACING AND INPUT



TOP FEATURES



User friendly design [The whole software can be operated via mobile application]



Highly secured



Graphical Presentation of the Data for Top Management for Analysis



Interface facility with the Smart Card Technology, Interface with the Bar Code



Comprehensive Performance Reports



Complete database driven, modular structure

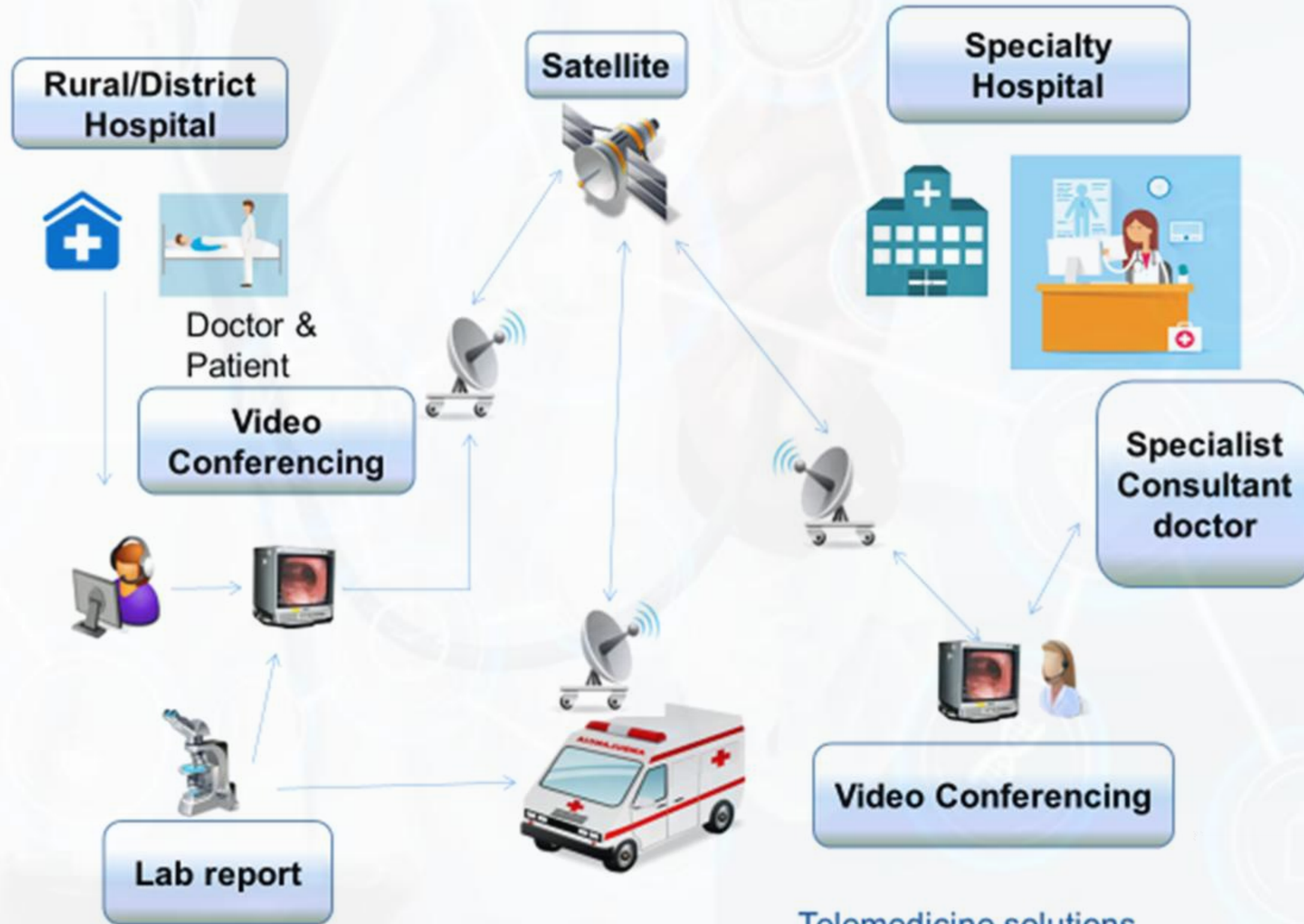


Package supports Adaptability & Scalability of software making it more robust



Single window view to locate patient Billing, Collection, Discharge Detail, Patient Medical History, clinical notes, OT details, etc.

TELEMEDICINE



Telemedicine solutions

INTERFACES

HIS STANDARDS COMPLIANCE

- ICD-10
- CPT4
- HL7
- ASTM
- HIPAA
- NABH
- CAP
- DICOM 3.0

THIRD PARTY PRODUCT COMPLIANCE

It can be interfaced with ERPs like

- Oracle
- SAP
- NAVision software
- SAGE
- MS Dynamics NAV
- Tally

and many more.

MEDICAL INSTRUMENT CONNECTIVITY



DICOM EQUIPMENT

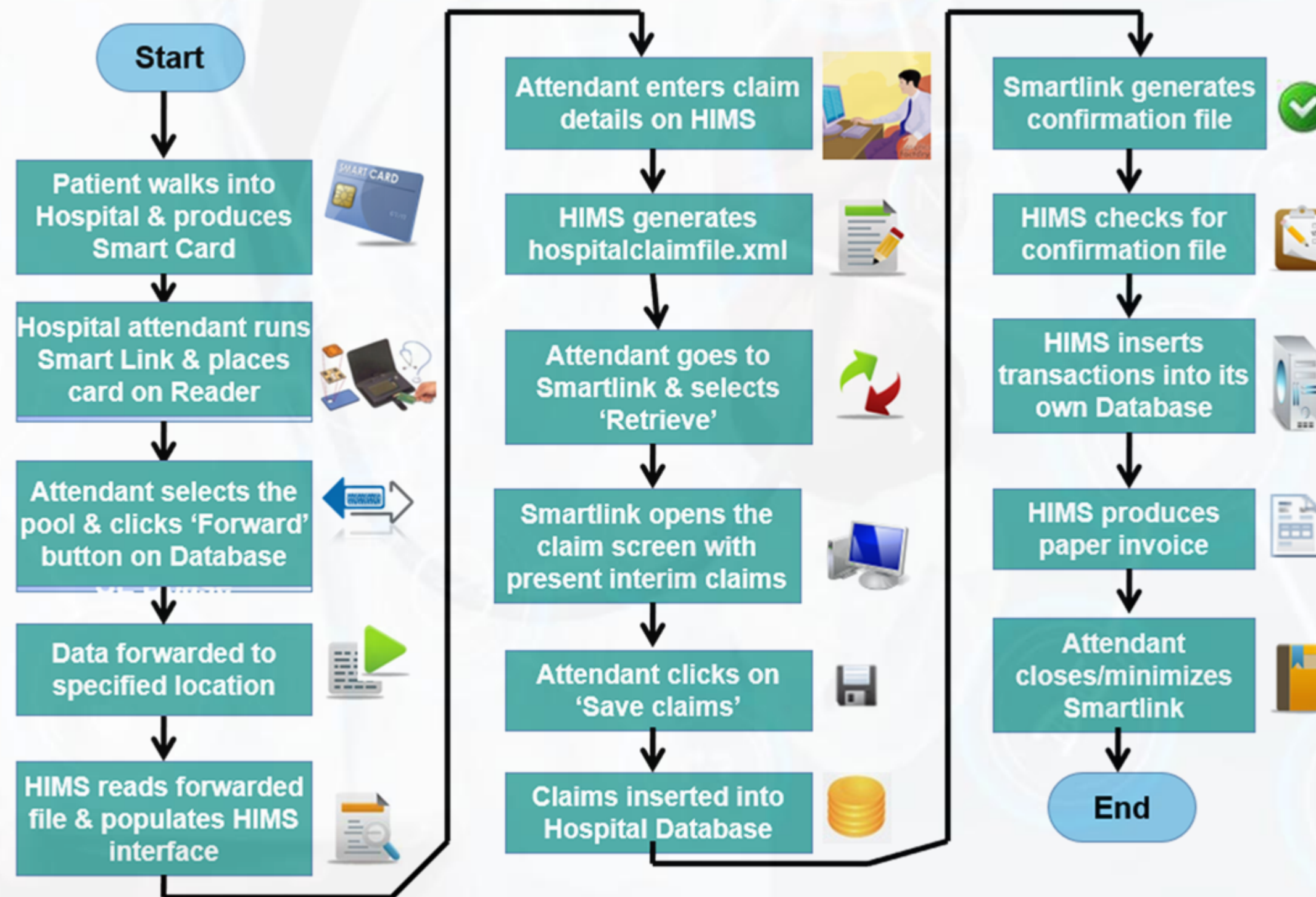
Like Radiology
Instruments
Xray, CT Scan
Ultrasound etc.

Non-DICOM equipment like
Laboratory Instruments,
Analysers in both uni-
directional as well as
bidirectional way.

LOCAL GADGETS CONNECTIVITY



INTEGRATION FOR INSURANCE CLAIMS



OUR CLIENTS



- SaiSudha Multi SpecialtyHospital
- Mahehsvara MedicalCollege,
- Delta MultiSpecialtyHospital,
- Srinivasa MultiSpecialtyHospital,Miryalguda
- SunLifeHospitalsPvt Ltd(100bedded,15Hospitals)
- PulseMultiSpecialtyHospital,
- ReviveMutliSpecialtyHospital, Siddipet
- AnvithaMultiSpecaltyHospital,
- ArogyaMultiSpecialtyHospital, Khammam
- ABCHospitals, Vizag
- SuryaMultiSpecialtyHospital
- AvinashMutliSpecialtyHospital
- SaiLaxmi Hospital,
- ColumbusMutli SpecialtyHospital,
- ChetanaMutliSpecialtyHospital,
- SaiPreetBhalkiHospital
- NandiniMutliSpeicaltyHospital,
- VivekMutliSpecialtyHospital,
- J.R.Hospital
- Friends MRI ScanCentre

Contact us:

Medicare Systems Pvt Ltd.

402,Raj darshan Society,

Near Platform No 1,

Thane west

MUMBAI-INDIA

M-9970236423/9967236423

www.medicaresystems.co.in

[Email-info@medicaresystems.co.in](mailto:info@medicaresystems.co.in)